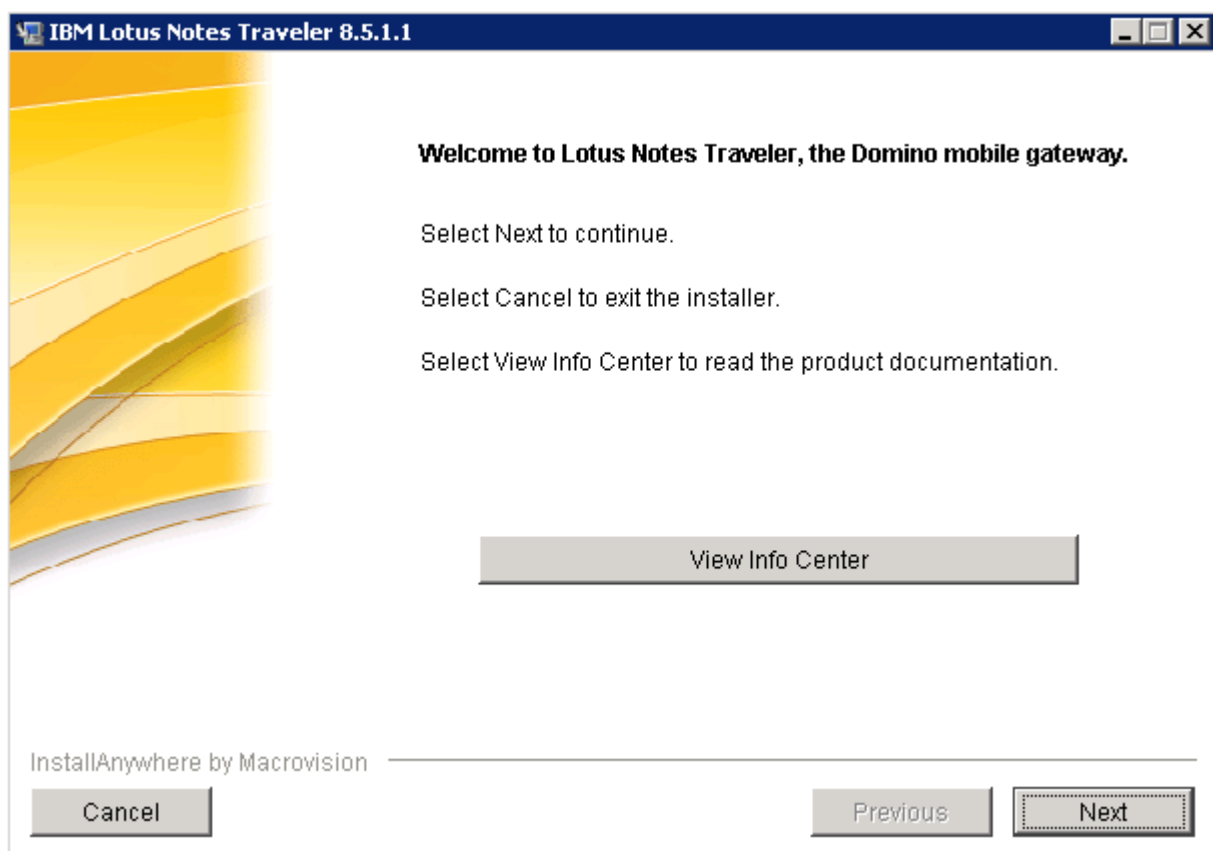
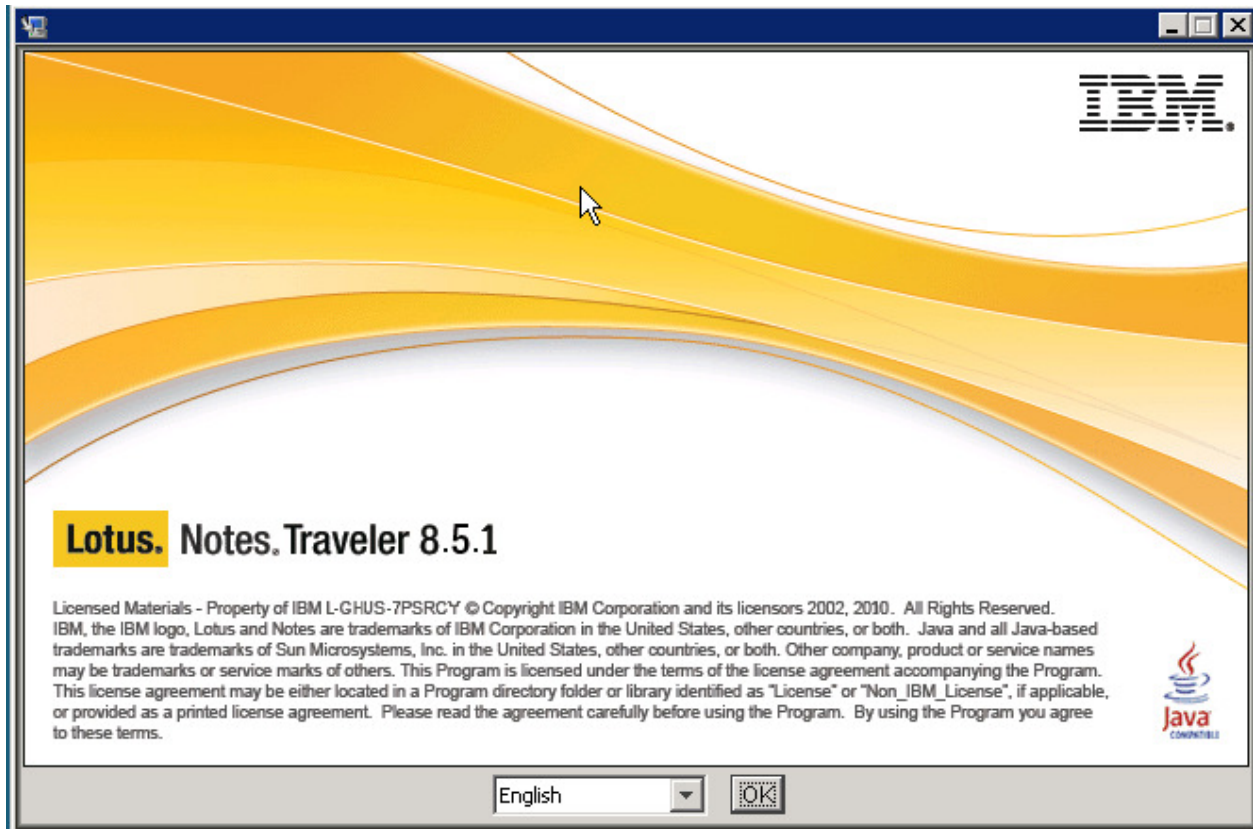


Lotus Notes Traveler 8.5.1.1 Installation

Installing Lotus Notes Traveler Ver 8.5.1.1 Cumulative Fix 1 (CF 1)

Install screens are the same for new and upgrade activity



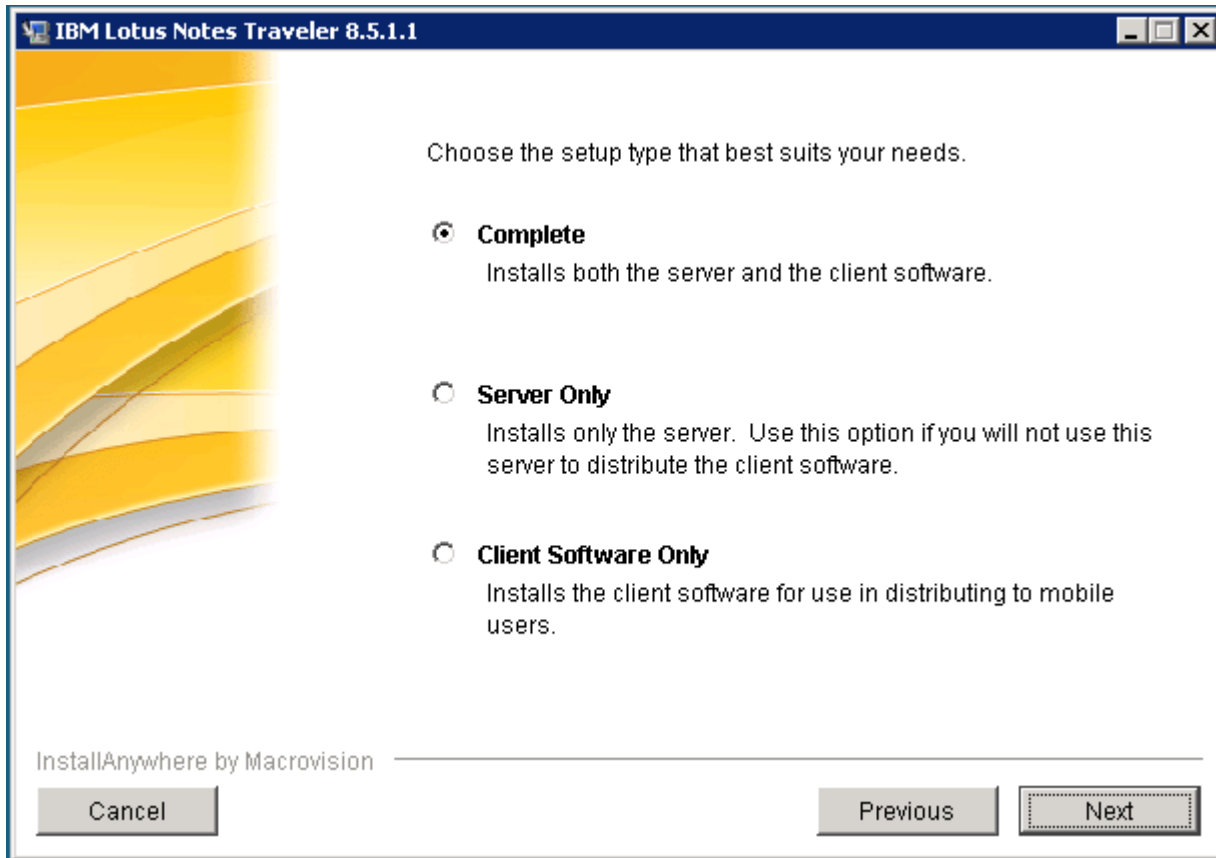
Click Next

The screenshot shows a web browser window displaying the IBM Lotus Domino and Notes Information Center. The page title is "Lotus Notes Traveler 8.5.1" and the section is "Overview". The content includes a welcome message: "Welcome to Lotus Notes Traveler, the Domino mobile gateway." Below this, there are instructions: "Select Next to continue.", "Select Cancel to exit the installer.", and "Select View Info Center to read the product documentation." A "View Info Center" button is visible. At the bottom, there are "Cancel", "Previous", and "Next" buttons. The left sidebar contains a navigation menu with items like "Domino 8.0 Administrator", "Lotus Notes 8.0", and "Lotus Notes Traveler 8.5.1".

Click Next

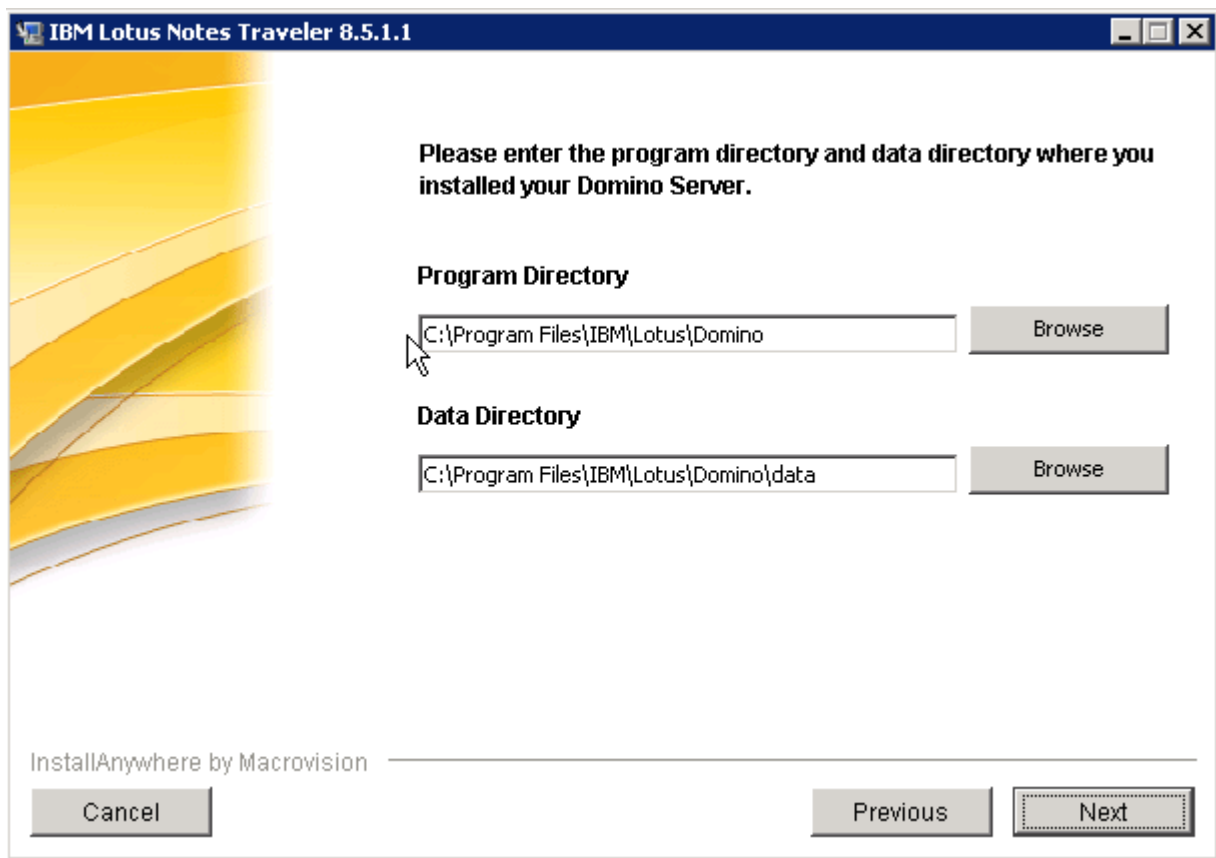
The screenshot shows the "IBM Lotus Notes Traveler 8.5.1.1" license agreement screen. The text reads: "Please read the following license agreement carefully." followed by "International Program License Agreement" and "Part 1 - General Terms". The main text of the agreement states: "BY DOWNLOADING, INSTALLING, COPYING, ACCESSING, CLICKING ON AN 'ACCEPT' BUTTON, OR OTHERWISE USING THE PROGRAM, LICENSEE AGREES TO THE TERMS OF THIS AGREEMENT. IF YOU ARE ACCEPTING THESE TERMS ON BEHALF OF LICENSEE, YOU REPRESENT AND WARRANT THAT YOU HAVE FULL AUTHORITY TO BIND LICENSEE TO". Below this text are two radio button options: "I accept the terms in the license agreement." (which is selected) and "I do not accept the terms in the license agreement.". There is a "Print" button and a mouse cursor pointing at the bottom right. At the bottom of the window, there are "Cancel", "Previous", and "Next" buttons.

Click Next

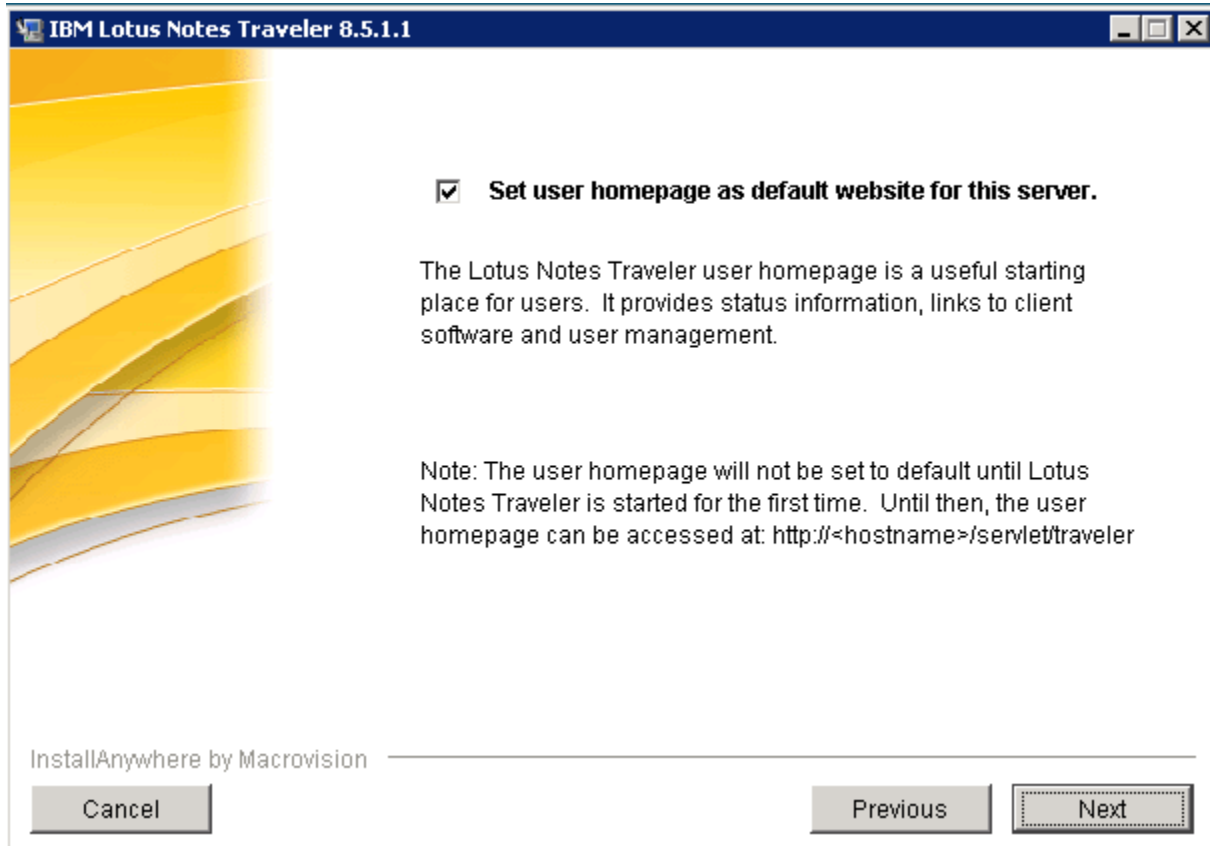


Choose Complete required for Apple iPhone auto configuration support.

Click Next

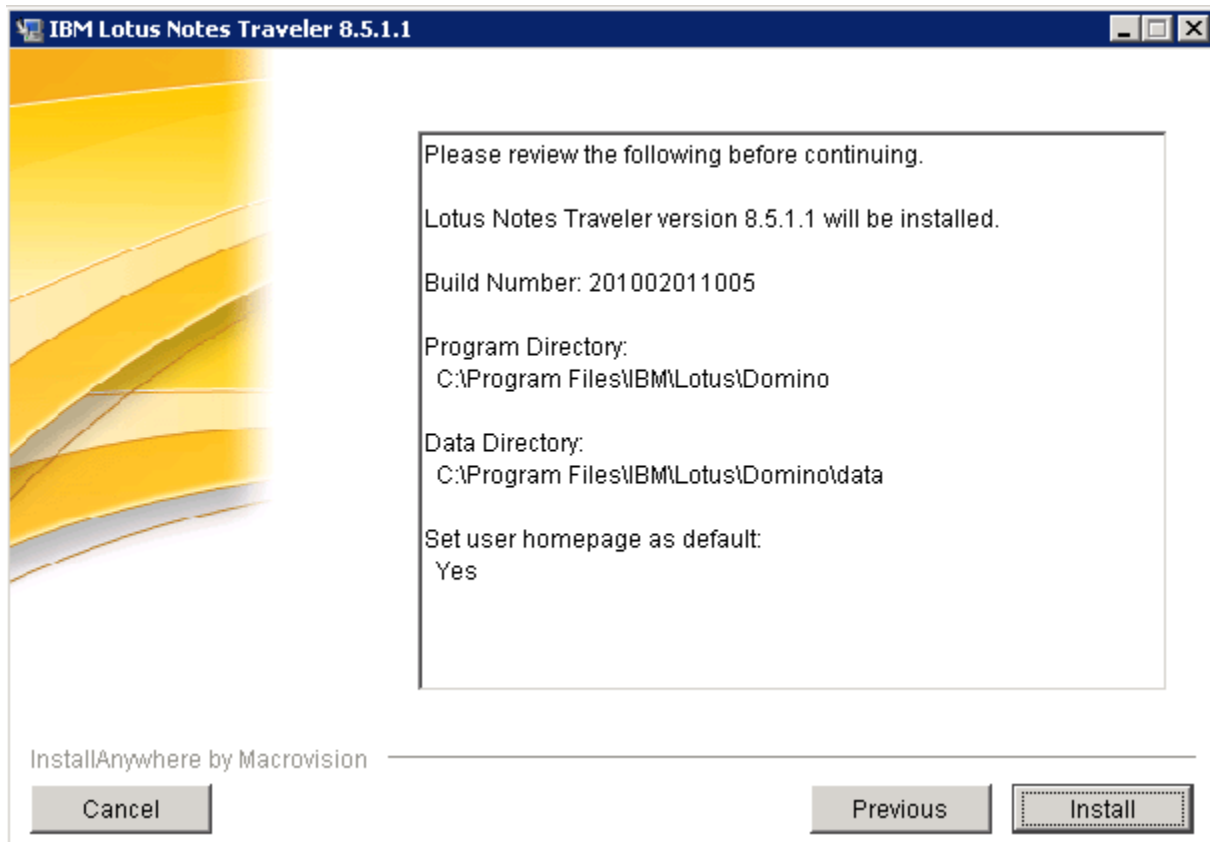


Enter any unique install directories and Click Next

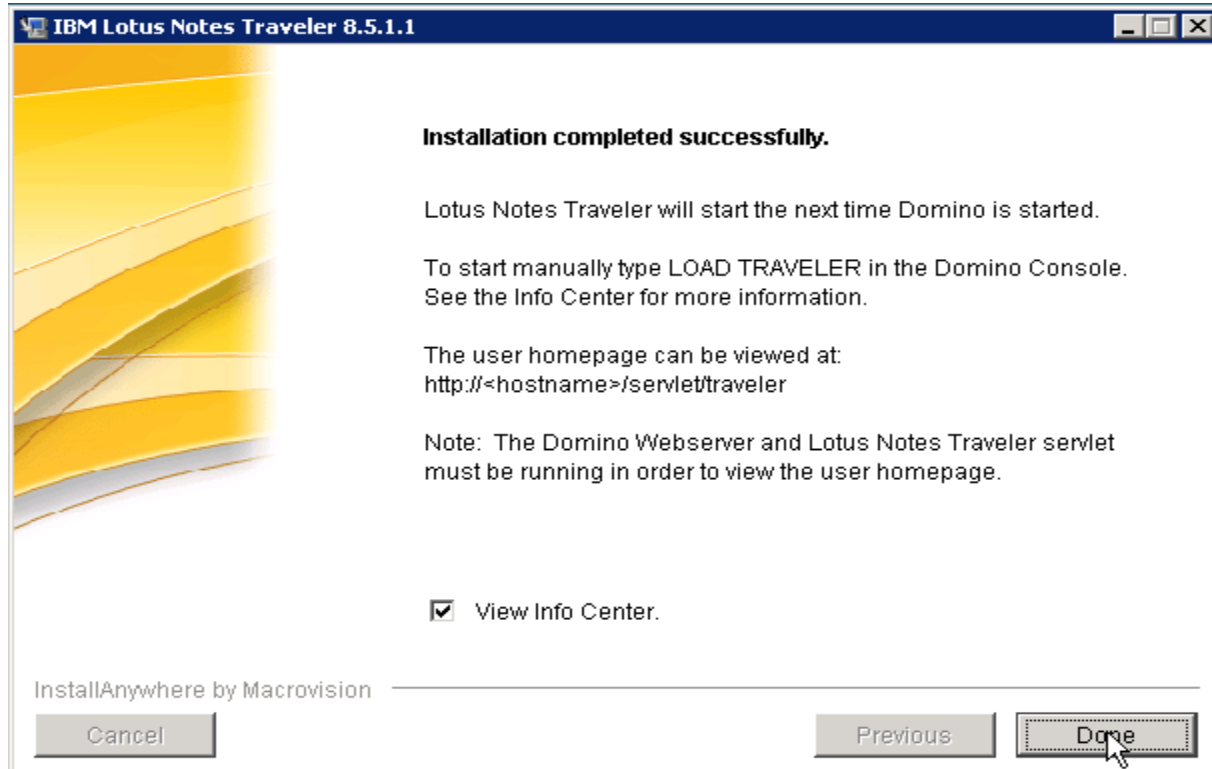


Enable to set user's homepage to the traveler home page. Makes it easier to enter a URL on small devices.

Click Next



Click Install



Click Done.

After Starting the Domino Server

Domino Server Console shows Traveler task and JVM related entries.

```
03/19/2010 05:03:08 PM Lotus Traveler: Server starting...
03/19/2010 05:03:09 PM HTTP Server: No Web SSO Configuration specified, using default ('LtpaToken').
03/19/2010 05:03:10 PM HTTP Server: Error loading Web SSO Configuration 'LtpaToken' (Single Sign-On
configuration is invalid)
03/19/2010 05:03:14 PM JVM: Java Virtual Machine initialized.
03/19/2010 05:03:14 PM HTTP Server: Java Virtual Machine loaded
03/19/2010 05:03:14 PM HTTP Server: DSAPI Domino Off-Line Services HTTP extension Loaded successfully
03/19/2010 05:03:14 PM Servlet engine initialization was successful
03/19/2010 05:03:14 PM HTTP JVM: com.lotus.sync.servlet.TravelerServlet: init
03/19/2010 05:03:18 PM HTTP JVM: Traveler 8.5.1.1 Build 201002011005
03/19/2010 05:03:18 PM HTTP Server: No Web SSO Configuration specified, using default ('LtpaToken').
03/19/2010 05:03:19 PM HTTP Server: Error loading Web SSO Configuration 'LtpaToken' (Single Sign-On
configuration is invalid)
03/19/2010 05:03:22 PM XSP Command Manager initialized
03/19/2010 05:03:22 PM Opened session for WebMail/Maiden (Release 8.5.1FP1)
03/19/2010 05:03:26 PM Lotus Traveler: Server started.
03/19/2010 05:03:35 PM HTTP Server: Started
```

Issue the following command from Domino server console where Traveler is installed:

➤ tell traveler version

```
Lotus Notes Traveler 8.5.1.1 Build 201002011005
running on Lotus Domino server Release 8.5.1FP1 | January 05, 2010
<end of doc>
```